

vedant S millenia

Divine homes Titwala-Mumbai

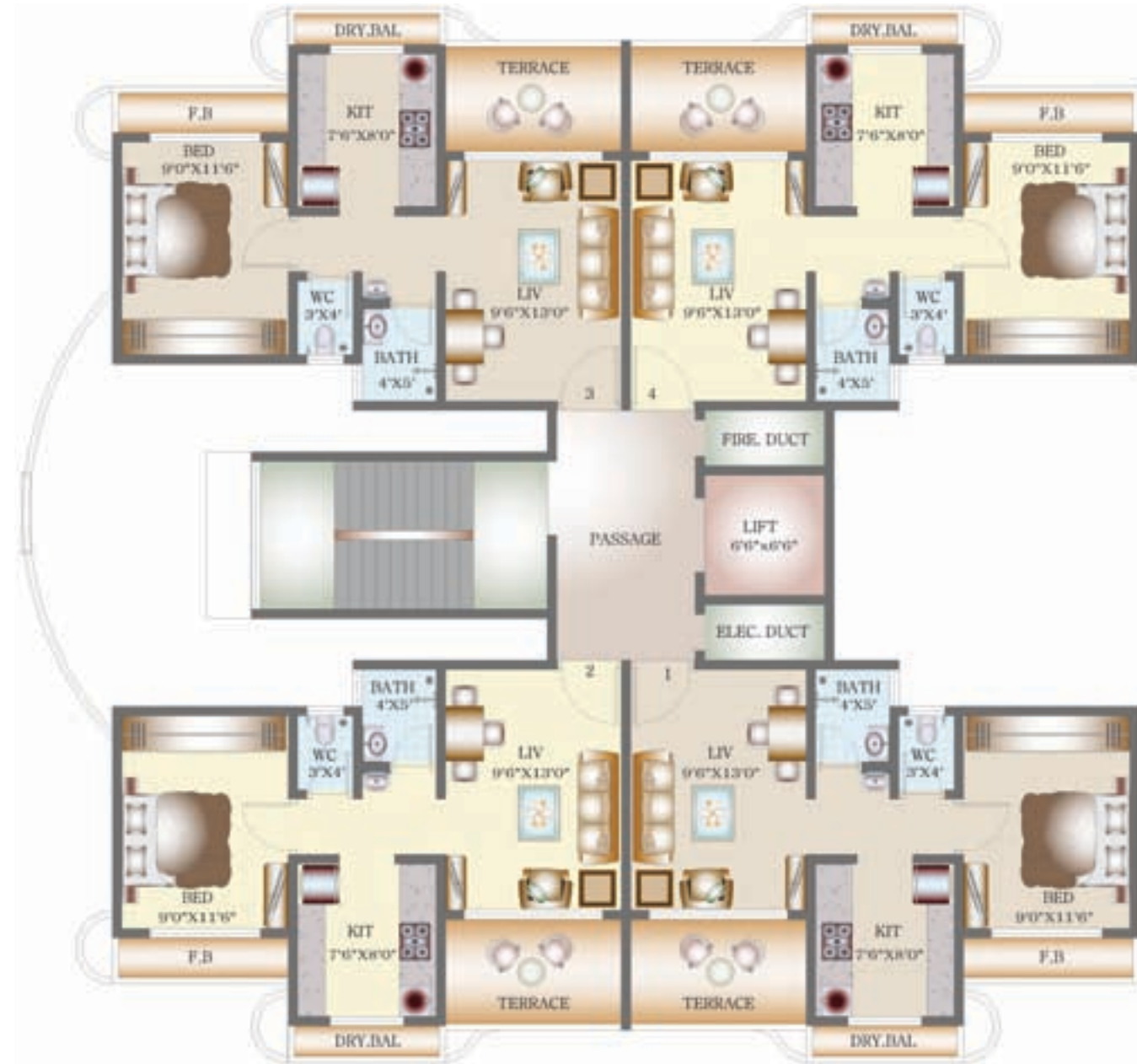
Vedant Millenia is located next to the Siddhivinayak Mahaganapati Temple of Titwala giving it an auspicious flavor throughout. The project is just 2 mins walking distance away from temple and 2 kms from Titwala railway station. With concrete road approach to all buildings and highway this project is a landmark of the future.

Vedant Millenia is a place where you can enjoy all the luxuries of life and still can satiate all needs without compromising on anything. It is all set to bring you a project in 25 acres, with 45 sky gazing towers comprising 1/2/3 BHK flats and a club house for your day to day entertainment. Vedant Millenia consists of a School, Market, Life care centre and many amenities that will transform your home into a convenient place of living.

The project has 7,9,14 and 18 storeys that will keep up our promise of building one of the biggest substantially integrated project in the central suburbs of Mumbai



WING A & D
TYPICAL 1st, 3rd, 5th & 7th Floor Plan



WING A & D
TYPICAL 2nd, 4th & 6th Floor Plan



WING B & C
TYPICAL 1st, 3rd, 5th, 7th, 9th, 11th & 13th Floor Plan



WING B & C
TYPICAL 2nd, 4th, 6th, 8th, 10th, 12th & 14th Floor Plan



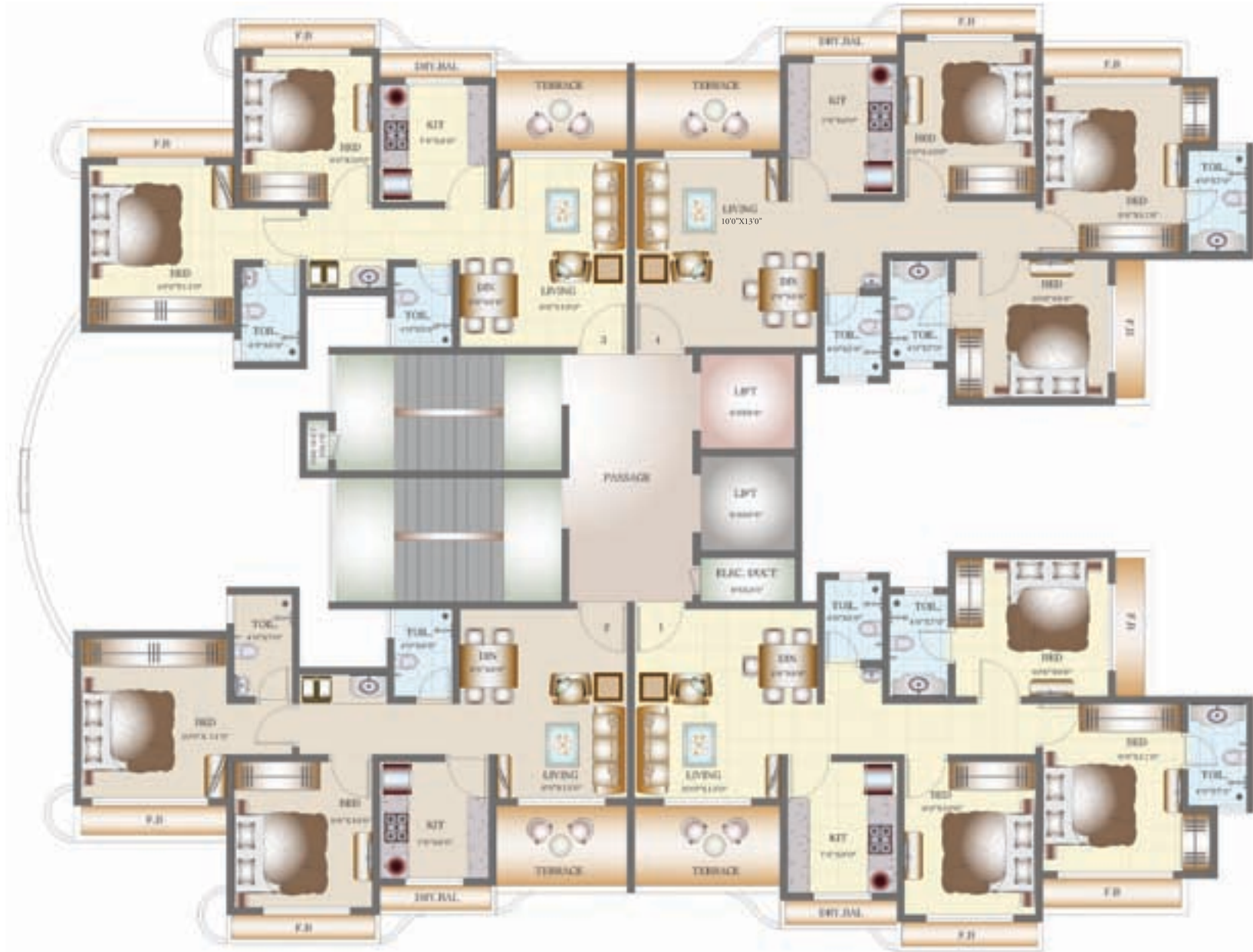


Club house



Amphitheater

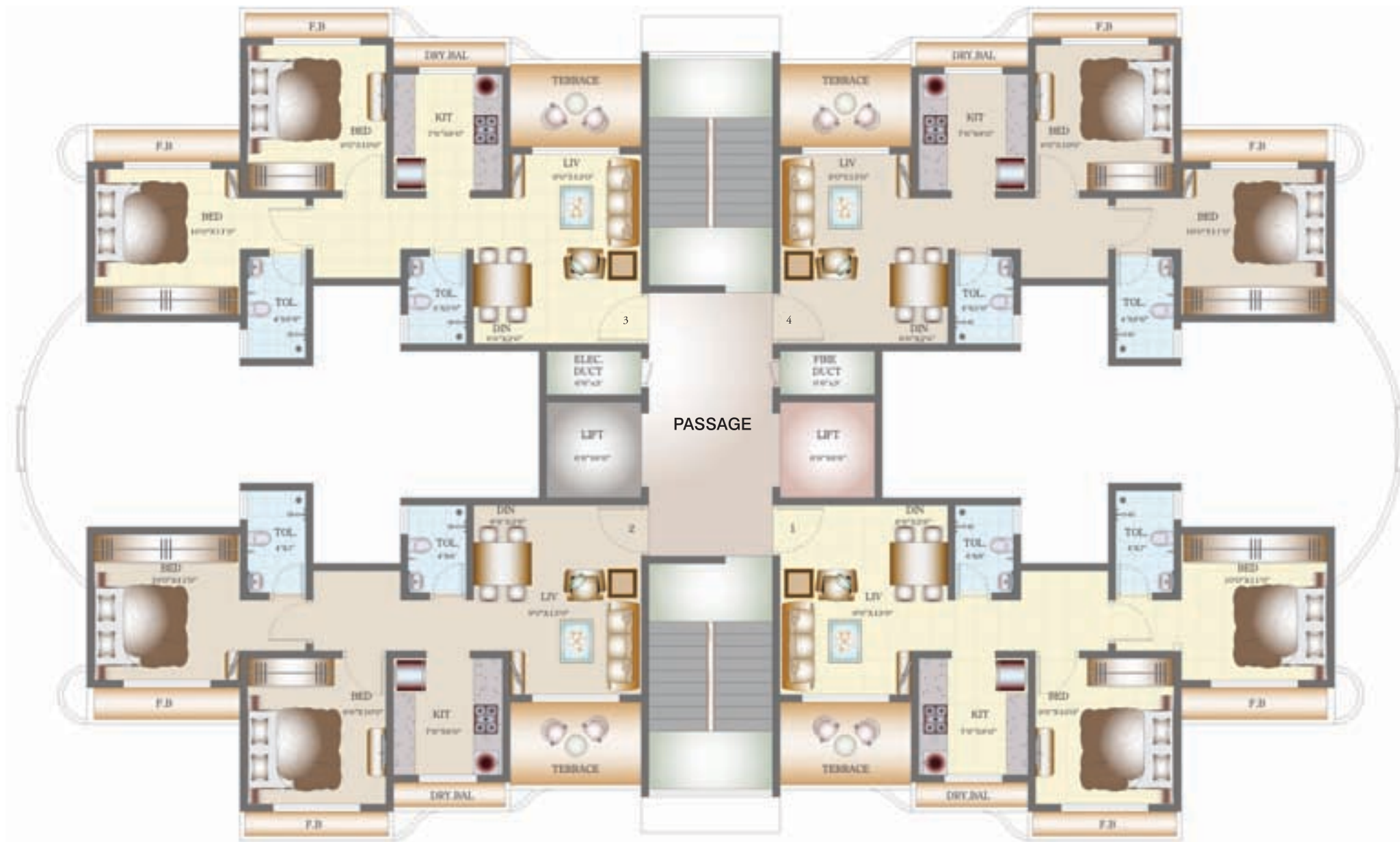
WING E
1st, 3rd, 5th, 7th & 9th Floor Plan



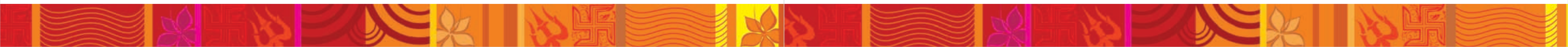
WING E
2nd, 4th, 6th & 8th Floor Plan



WING F
TYPICAL 1st, 3rd, 5th, 7th, 9th, 11th & 13th Floor Plan



WING F
TYPICAL 2nd, 4th, 6th, 8th, 10th, 12th & 14th Floor Plan





Shopping centre



School





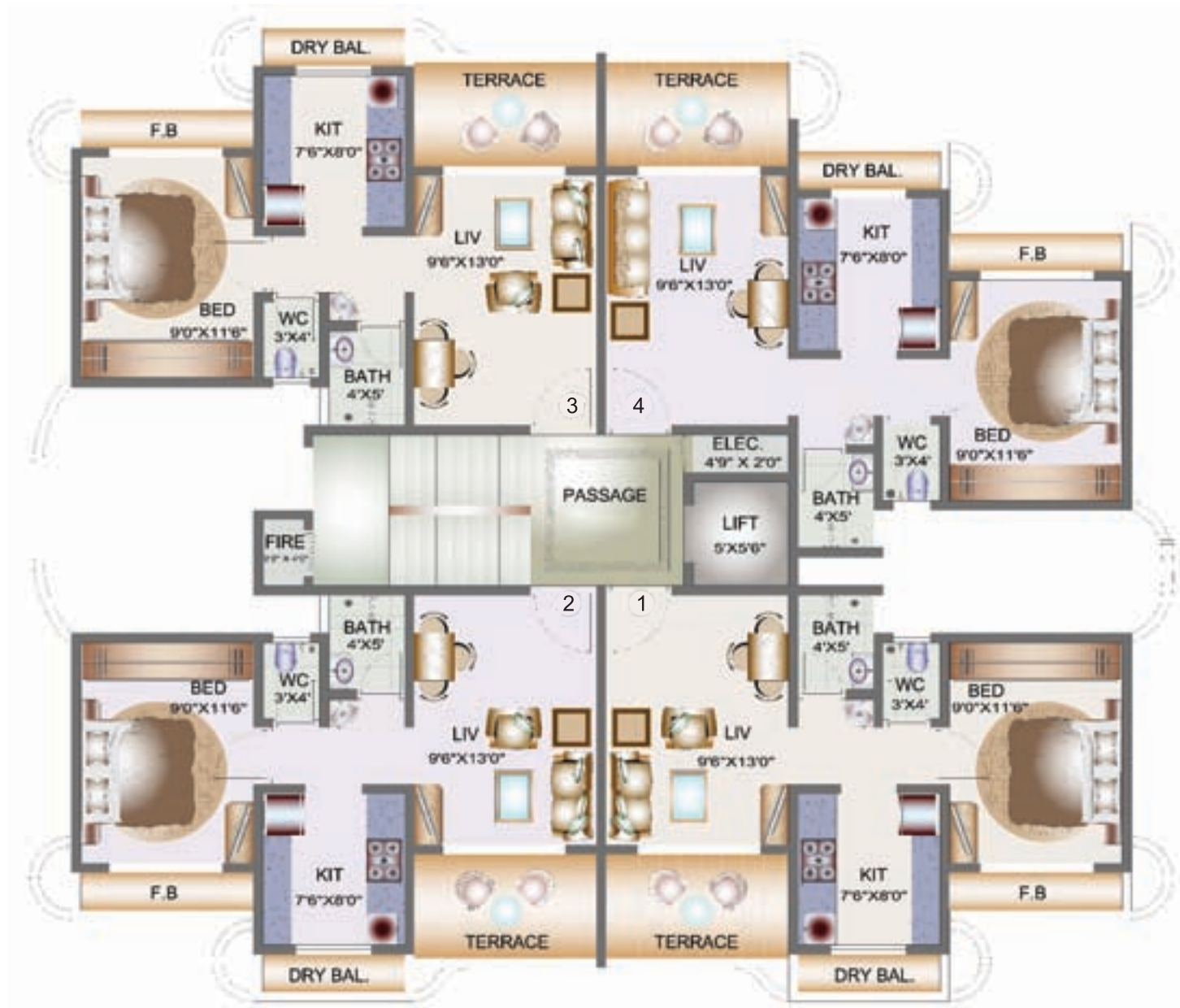


Children's play area



Net cricket

WING X
TYPICAL 1st,3rd,5th & 7th Floor Plan



WING X
TYPICAL 2nd, 4th & 6th Floor Plan



WING Y
TYPICAL 1st,3rd,5th & 7th Floor Plan

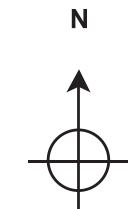
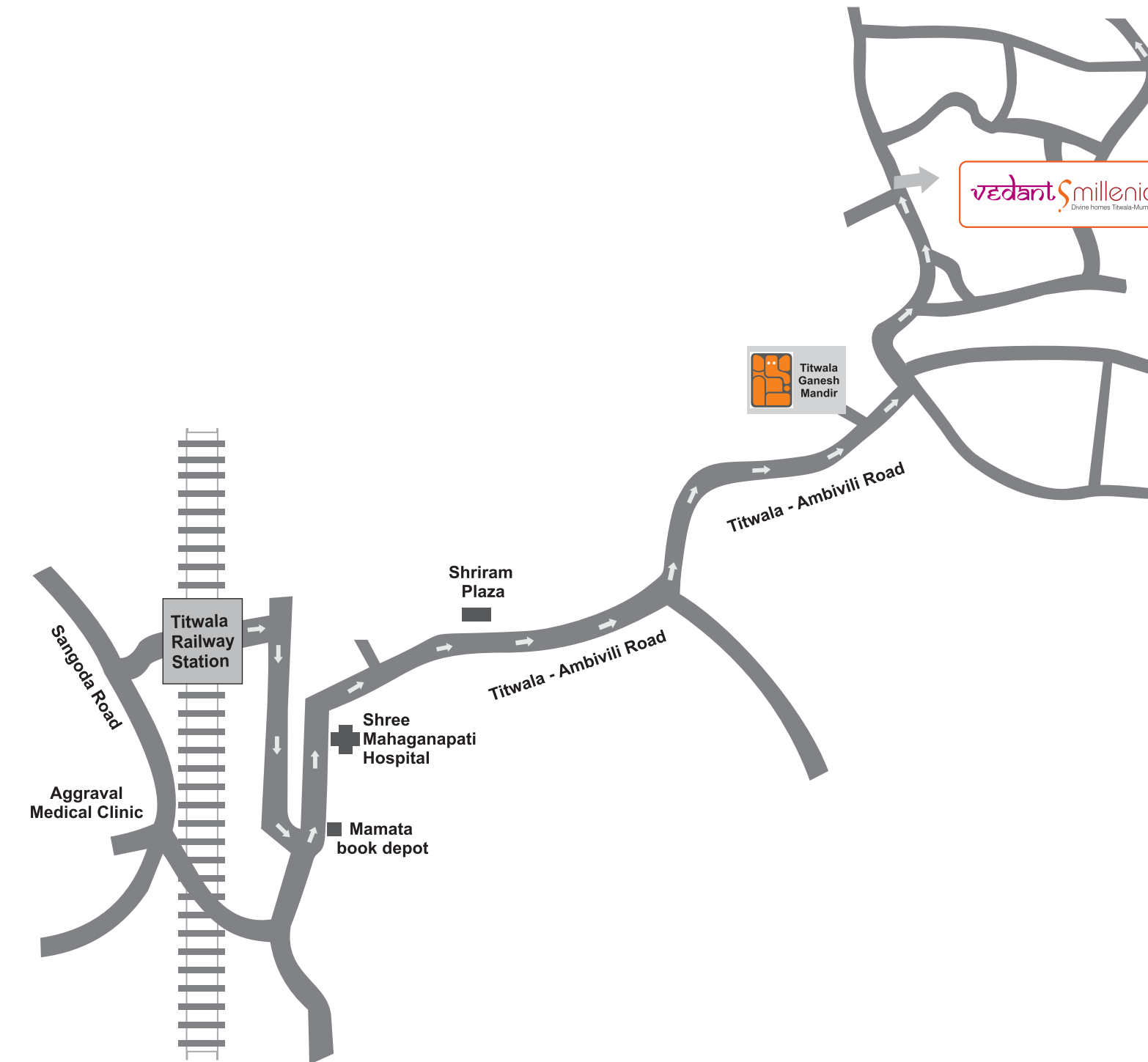


WING Y
TYPICAL 2nd, 4th & 6th Floor Plan





Night view



Location Map

vedant Smillenia

Divine homes Titwala-Mumbai

THARWANI
INFRASTRUCTURES
Aspiring for Aesthetics

Site address: Behind Mahaganapati mandir, Titawala East 421 605 Tel: 91587 57000 | 93221 77700 | 86528 17000 | Email: customer care@tharwani.co.in | info@tharwani.co.in | website: www.tharwani.co.in

Corporate office: 310 - 313, 3rd Floor, Persipolis, Plot No. 74, Sector 17, Vashi, Navi Mumbai

Disclaimer: All plans, drawings, facilities etc. are subject to the approval of the respective authorities and would be changed, if necessary. The discretions remain with the developer. All renderings, floor plans, pictures and maps are the artist's conception and not actual depiction of the buildings, it's walls roadways or landscaping. Dimensions in plan are mentioned in British system for user's ease. conversion: 1SMT = 10.764 sq. ft. 1 RMT = 3.25 rft